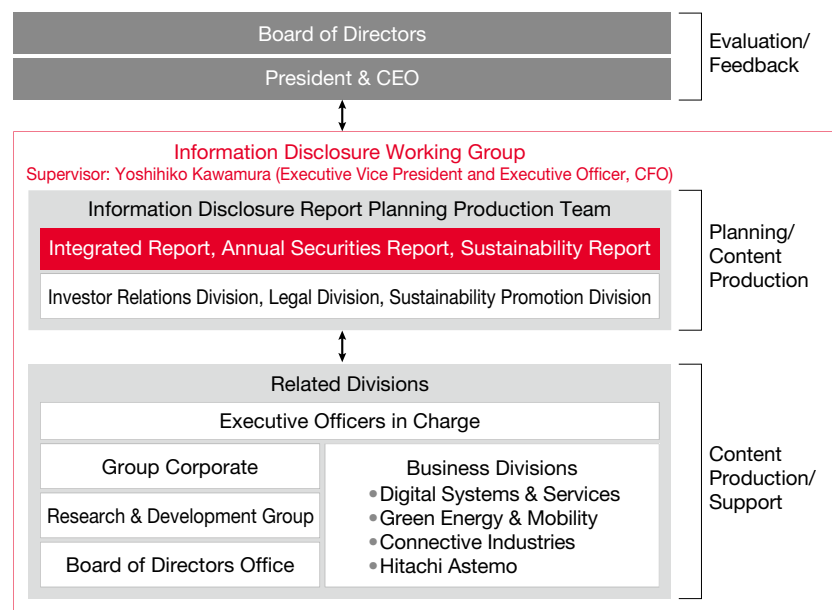


Hitachi Integrated Report 2022 Editorial Policy

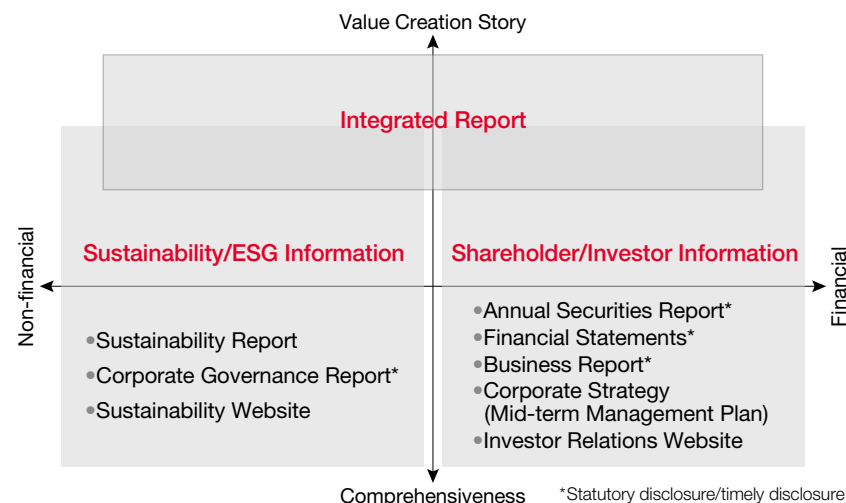
Editorial Policy The Hitachi Integrated Report is compiled for the purposes of facilitating a deeper understanding among stakeholders of Hitachi's business model, as well as a dialogue through which we can further enhance corporate value and realize a virtuous cycle of value co-creation. In the 2022 edition, we clarify materiality within Hitachi's sustainable management and systematically explain strategies and measures. In addition to highlighting Hitachi's history of value co-creation and the Mid-term Management Plan 2024, this report will enhance the reader's understanding of Hitachi's sustainable growth potential.

In editing this report, we referred to the IFRS Foundation's International Integrated Reporting Framework and the Japanese Ministry of Economy, Trade, and Industry's Guidance for Collaborative Value Creation.

Production Structure



Information Disclosure Structure



Reporting Scope

Period: Fiscal 2021 (April 1, 2021–March 31, 2022)
 Note: Includes activities and other information occurring after April 1, 2022.
 Companies: Hitachi, Ltd. and its consolidated subsidiaries
 Accounting Standard: Unless otherwise noted, this report is prepared in accordance with U.S. GAAP through fiscal 2013 and with the International Financial Reporting Standards (IFRS) from fiscal 2014.

Disclaimer Regarding Forward-looking Statements

Certain statements regarding the future of the company set forth in this Report may constitute "forward-looking statements," such as "plan," "forecast," "target," and "strategy." Although forward-looking statements contained in this report are based upon what the company has determined to be reasonable assumptions at the time of disclosure, actual performance and other results may differ materially from those anticipated in such statements.

Website Information

About the Hitachi Group

Japanese <https://www.hitachi.co.jp/>
 English <https://www.hitachi.com/>

Investor Relations

Japanese <https://www.hitachi.co.jp/IR/>
 English <https://www.hitachi.com/IR-e/>

Sustainability

Japanese <https://www.hitachi.co.jp/sustainability/>
 English <https://www.hitachi.com/sustainability/>