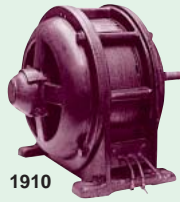


History Highlights

- 1910 • Founded by Namihei Odaira as an electrical repair shop
 • Succeeded in first domestic manufacture of three 5-HP (3.6775-kW) electric motors as the company's first products



1910

- 1915 • Completed 10,000-HP (7,355-kW) water turbine

- 1924 • Completed the first large-scale DC electric locomotives to be manufactured in Japan



1924

- 1931 • Completed 10,000-A hydraulic electrolytic cell

- 1932 • Completed Hitachi's first electric refrigerator

- 1943 • Completed 85,000-kW Francis water turbine and 70,000-kVA alternating current generator

- 1952 • Completed 21,000-kW two-stage pump-turbine

- 1954 • Completed the first large-scale cold strip mill to be produced in Japan

- 1955 • Completed 100,000-kW Francis water turbine and 93,000-kVA alternating current generator

- 1958 • Electron microscope awarded the grand prix at the World Exposition in Brussels



1958

- 1959 • Completed electronic computers based on transistors
 • Hitachi America, Ltd. established

- 1961 • Completed experimental nuclear reactor

- 1964 • Completed the first cars for the Shinkansen (bullet train)
 • Completed monorail system running between Haneda Airport and Hamamatsu-cho, Tokyo

- 1968 • Developed hybrid LSI
 • Developed 300-m/min elevators for high-rise buildings

- 1969 • Completed on-line banking system
 • Developed and mass-produced all-transistor color televisions



1970

- 1970 • Developed computer-aided traffic control system for the Shinkansen (bullet train)

- 1973 • Developed new-type image pickup tube

- 1974 • Commercial operation began at Japan's first 460,000-kW nuclear power station
 • Released the first series of general-purpose large-scale computers



1974

- 1975 • Hitachi High Crown Control Mill developed

- 1978 • Completed world's first field emission electron microscope with record-high resolution
 • Experimental color camera with solid-state miniature image device developed

- 1982 • Hitachi Europe Ltd. established
 • Succeeded in world's first micro-level observation of magnetic field by the use of electron beam holography
 • Listed on New York Stock Exchange

- 1984 • Started mass production of 256-kbit DRAMs

- 1985 • Completed the "JT-60" large-scale Tokamak device for break-even plasma experiments
 • The Hitachi Foundation was established to promote cultural, educational and scientific exchanges between Japan and the U.S.

- 1988 • Hitachi Asia Pte. Ltd. established

- 1989 • Developed world's fastest superconductive computer
 • Developed superconductive MR imaging equipment
 • Established two R&D centers in the U.S. and two laboratories in Europe

- 1990 • Released very large-scale computer with the world's fastest processing speed at that time

- 1991 • Developed inverter-controlled electric locomotive with the world's largest control capacity
 • Developed highly sensitive image pickup tubes



1991

- 1993 • Developed Shinkansen (bullet train) with new maximum service speed of 270 km/h

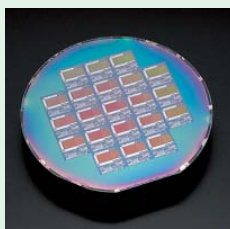
- 1994 • Hitachi (China), Ltd. established
 • Developed the original 32-bit RISC processor SuperH family

- 1995
- Developed Super TFT LCD module featuring ultra-wide viewing angles
 - Developed 10-Gbit/s fiber-optic transmission equipment



1995

- 1998
- Developed 320-Gbit/s optical data transmission system
 - Developed the experimental 128-Mbit single-electron memory



1998

- 1999
- Established dependable autonomous hard real-time management technology

- 2000
- Developed 52.5-Gbit/in² perpendicular magnetic recording

- 2001
- Developed Notary and Certificate Authority systems for e-government
 - Developed mobile web-gateway system
 - Developed application processor for mobile phones

- 2002
- Developed world's first silent water-cooling notebook PC
 - Developed world's smallest 0.3-mm² noncontact IC chip
 - Developed compact DNA analysis system genetic for SNP typing



2002

- 2003
- Development and commercialization of a compact, highly accurate, high-speed finger vein authentication system
 - Successful measurement of infant brain functions using optical topography
 - Dr. Hideaki Koizumi, a Hitachi Fellow, presented a lecture at the 400th Anniversary of the Foundation of the Pontifical Academy of Sciences, Vatican City



2003

Financial Highlights (consolidated)

Net Sales		Millions of yen	
Year	2002	2003	2004
	7,993,784	8,191,752	8,632,450

Capital Investment		Millions of yen	
Year	2002	2003	2004
	856,279	787,496	816,547

Net Income (loss)		Millions of yen	
Year	2002	2003	2004
	(483,837)	27,867	15,876

Overseas Sales		Millions of yen	
Year	2002	2003	2004
	2,549,122	2,645,209	2,977,594

Years ended March

Trademarks

name	explanation	page
CompactFlash	CompactFlash is a trademark of SanDisk Corporation, registered in the United States and other countries.	8
Java	Java and all Java-based trademarks and logos are trademarks or registered trademarks of Sun Microsystems, Inc. in the United States and other countries.	11
Windows	Windows is a registered trademark of Microsoft Corporation in the U.S. and other countries.	11
HP-UX	HP-UX is a product name of Hewlett-Packard Company.	11
AIX	AIX is a registered trademark of the International Business Machines Corp. in the U.S.	11
Linux	Linux is a registered trademark of Linus Torvalds.	11
Solaris	Solaris is a trademark or registered trademark of Sun Microsystems, Inc. in the United States and other countries.	11
Ethernet	Ethernet is a registered trademark of Xerox Corp.	12
EZweb EZFlat EZChannel CDMA 1X WIN	EZweb, EZFlat, EZChannel, and CDMA 1X WIN are trademarks or registered trademarks of KDDI Corporation in Japan.	15
miniSD	miniSD is a trademark of SD Association in Japan.	15
UNIX	UNIX is a registered trademark in the United States and other countries, licensed exclusively through X/Open Company Limited.	24
POWER4+	POWER4+ is a trademark of the International Business Machines Corp.	24
Oracle	Oracle is a registered trademark of Oracle Corporation.	26
Itanium	Itanium is a registered trademark or a trademark of Intel Corporation or its subsidiaries in the U.S. and other countries.	28
Intel Xeon	Intel Xeon is a registered trademark or a trademark of Intel Corporation or its subsidiaries in the U.S. and other countries.	28
ESCON	ESCON is a registered trademark of the International Business Machines Corp. in the U.S.	33
WXGA	WXGA is a registered trademark of the International Business Machines Corp. in the U.S.	37
XGA	XGA is a registered trademark of the International Business Machines Corp. in the U.S.	37
ALLEGRO	ALLEGRO is a trademark of Philips Medical System, a division of Koninklijke Philips Electronics N.V.	72
Pentium	Pentium is a registered trademark of Intel Corporation in the USA and other countries.	75
Bluetooth	Bluetooth is a trademark of Bluetooth SIG, Inc.	85
OMG	OMG is a trademark of Object Management Group, Inc. in the United States.	85

• Other company and product names in this booklet may be trademarks or registered trademarks of their respective owners.

Organization of Hitachi, Ltd.

(As of June, 2004)

