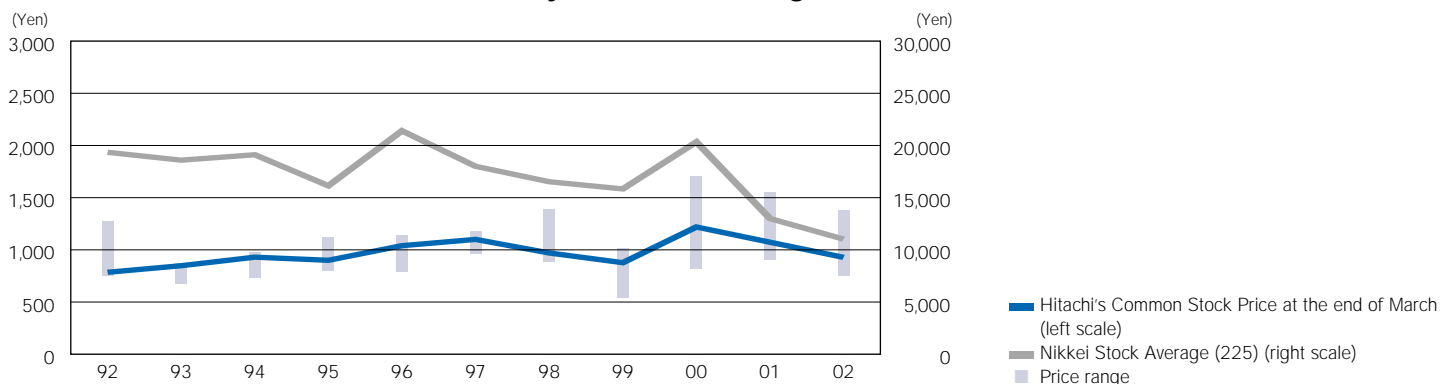


Stock Information

Common Stock Price Movement (Tokyo Stock Exchange)



Price Range of Hitachi Common Stock

	1992	1993	1994	1995	1996	1997	1998	1999	2000	2001	2002
Price range High	¥ 1,270	¥ 873	¥ 979	¥ 1,120	¥ 1,140	¥ 1,180	¥ 1,390	¥ 1,015	¥ 1,709	¥ 1,549	¥1,380
Price range Low	750	670	729	799	781	961	877	532	814	899	745
Price at the end of March	785	848	930	900	1,040	1,100	970	877	1,219	1,073	928
Nikkei Stock Average (225)	19,345	18,591	19,111	16,139	21,406	18,003	16,527	15,836	20,337	12,999	11,024

Note: Common stock prices are those of Hitachi, Ltd.

Price/Earnings Ratio, Price/Cash Flow Ratio and Price/Book Value Ratio

Years ended March 31	1992	1993	1994	1995	1996	1997	1998	1999	2000	2001	2002
Net income (loss) per share											
(Diluted) (¥)	36.91	22.68	19.27	33.02	40.48	25.97	3.58	(98.15)	4.99	30.32	(144.95)
Price/earnings ratio (Times)	21.3	37.4	48.3	27.3	25.7	42.4	270.9	—	244.3	35.4	—
Free cash flows per share (¥)	(99.92)	(16.95)	(12.55)	80.65	(55.88)	(108.18)	(61.36)	(17.40)	4.47	46.47	59.72
Price/free cash flow ratio (Times)	—	—	—	11.16	—	—	—	—	272.71	23.09	15.54
Stockholders' equity per share (¥)	890.64	897.42	901.71	922.73	1,068.00	1,054.26	1,012.77	900.57	895.08	857.27	690.28
Price/book value ratio (Times)	0.88	0.94	1.03	0.98	0.97	1.04	0.96	0.97	1.36	1.25	1.34
Cash dividends declared											
per share (¥)	11.00	11.00	11.00	11.00	11.00	11.00	11.00	5.50	6.00	11.00	3.00

Notes: 1. Net income (loss) per share is based on common stock and common stock equivalents of Hitachi, Ltd.

2. Stockholders' equity per share is based on common stock of Hitachi, Ltd.

3. Free cash flows per share is based on common stock and common stock equivalents of Hitachi, Ltd.

4. See notes on inside cover.

Equity-Linked Financings

Issue date	Type	Amount	Coupon (%)	Conversion Price	Redemption Date
8/ 2 /1988	CB #6	¥120,000 million	1.3	¥1,875.20	9/30/2003
5/16/1989	CB #7	¥250,000 million	1.4	¥1,694.30	9/30/2004

Major Stockholders

As of March 31, 2002

	Numbers of Shares held	Percentage of Shares Held
Japan Trustee Services Bank, Ltd.	175,867,000	5.33%
The Chase Manhattan Bank, N.A. London	150,267,096	4.55%
State Street Bank and Trust Company	134,965,549	4.09%
NATS CUMCO	127,422,080	3.86%
Nippon Life Insurance Company	115,325,472	3.50%
The Mitsubishi Trust and Banking Corporation	113,389,222	3.44%
Mitsui Asset Trust and Banking Co.,Ltd.	95,079,000	2.88%
The Dai-Ichi Mutual Life Insurance Company	93,111,000	2.82%
UFJ Trust Bank Limited	87,874,565	2.66%
Hitachi Employees' Shareholding Association	82,217,952	2.49%

Note: NATS CUMCO is the nominee name for the aggregate of the Company's American Depositary Receipts (ADRs) holders.

Composition of Shareholders

As of March 31, 2002

Financial Institutions and Securities Firms	38.66%
Foreign Investors	31.82%
Individuals	26.27%
Others	3.25%
Governments	0.00%

Transfer Agent for the Shares:

TOKYO SECURITIES TRANSFER AGENT CO., LTD.

5-1, Marunouchi, 1-chome, Chiyoda-ku, Tokyo, 100-0005, Japan
Tel. +81-3-3212-4601

Depositary for American Depositary Receipts:

Citibank, N.A.

111 Wall Street, 20th Floor
New York, New York 10005, USA
Tel. +1-877-CITI-ADR (248-4237)

Overseas Stock Exchange Listings

Luxembourg, Frankfurt, Amsterdam, Paris and New York stock exchanges

Japanese Stock Exchange Listings

Tokyo, Osaka, Nagoya, Fukuoka, and Sapporo stock exchanges