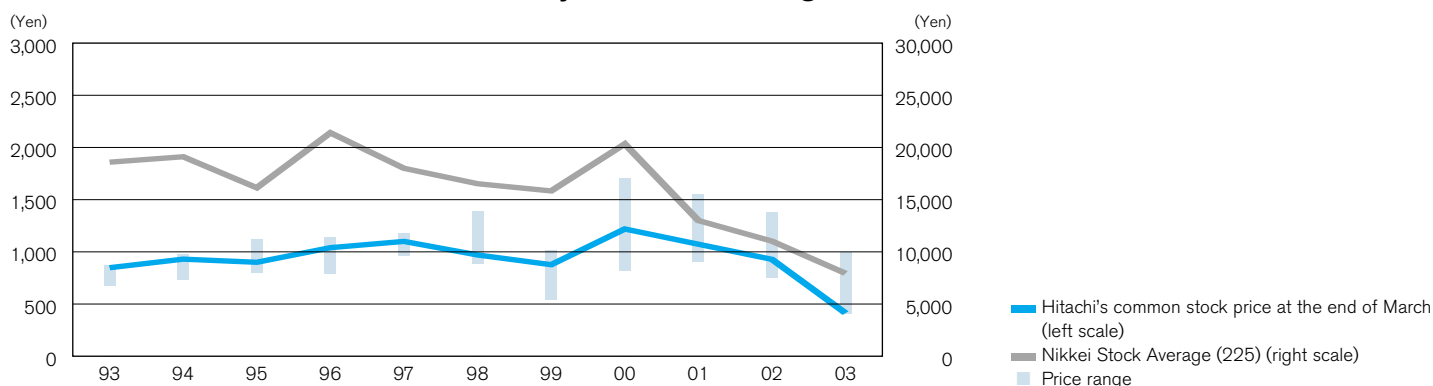


Stock Information

Common Stock Price Movement (Tokyo Stock Exchange)



Price Range of Hitachi Common Stock (Tokyo Stock Exchange)

	1993	1994	1995	1996	1997	1998	1999	2000	2001	2002	2003
Price range High	¥ 873	¥ 979	¥ 1,120	¥ 1,140	¥ 1,180	¥ 1,390	¥ 1,015	¥ 1,709	¥ 1,549	¥ 1,380	¥ 997
Low	670	729	799	781	961	877	532	814	899	745	398
Price at the end of March	848	930	900	1,040	1,100	970	877	1,219	1,073	928	413
Nikkei Stock Average (225)	18,591	19,111	16,139	21,406	18,003	16,527	15,836	20,337	12,999	11,024	7,973

Note: Common stock prices are those of Hitachi, Ltd.

Price/Earnings Ratio, Price/Cash Flow Ratio and Price/Book Value Ratio

Years ended March 31

	1993	1994	1995	1996	1997	1998	1999	2000	2001	2002	2003
Number of shares on which diluted net income per share is calculated (thousand)	3,534,595	3,534,594	3,534,231	3,568,498	3,547,591	3,366,369	3,337,895	3,366,369	3,544,817	3,337,850	3,351,625
Common stock of Hitachi, Ltd. at March 31 (thousand)	3,276,252	3,281,724	3,287,404	3,329,139	3,337,796	3,337,895	3,337,895	3,337,900	3,337,932	3,338,481	3,368,124
Net income (loss) per share (Diluted) (¥)	22.68	19.27	33.02	40.48	25.97	3.58	(98.15)	4.99	30.32	(144.95)	8.19
Price/Earnings ratio (Times)	37.4	48.3	27.3	25.7	42.4	270.9	—	244.3	35.4	—	50.4
Free cash flows per share (¥)	—	—	—	(55.88)	(108.18)	(64.63)	(18.48)	4.71	46.47	62.91	8.13
Price/Free cash flow ratio (Times)	—	—	—	—	—	—	—	258.76	23.09	14.75	50.83
Stockholders' equity per share (¥)	897.42	901.71	922.73	1,068.00	1,054.26	1,012.77	900.57	895.08	857.27	690.28	550.76
Price/Book value ratio (Times)	0.94	1.03	0.98	0.97	1.04	0.96	0.97	1.36	1.25	1.34	0.75
Cash dividends declared per share (¥)	11.00	11.00	11.00	11.00	11.00	11.00	5.50	6.00	11.00	3.00	6.00

Notes: 1. Stockholders' equity per share is based on common stock of Hitachi, Ltd. as of March 31.

2. Free cash flows per share is based on the number of shares on which diluted net income (loss) per share is calculated.

3. See notes on inside cover.

Equity-Linked Financings

Issue Date	Type	Amount	Coupon (%)	Conversion Price	Redemption Date
8/ 2 /1988	CB #6	¥120,000 million	1.3	¥1,875.20	9/30/2003
5/16/1989	CB #7	¥250,000 million	1.4	¥1,694.30	9/30/2004

Major Stockholders

As of March 31, 2003

	Numbers of Shares Held	Percentage of Shares Held
Japan Trustee Services Bank, Ltd.	212,080,650	6.37%
NATS CUMCO	172,918,080	5.20%
The Master Trust Bank of Japan, Ltd.	169,035,321	5.08%
The Chase Manhattan Bank, N.A. London	133,317,139	4.01%
Nippon Life Insurance Company	111,221,960	3.34%
State Street Bank and Trust Company	92,709,173	2.79%
The Dai-ichi Mutual Life Insurance Company	81,770,222	2.46%
Hitachi Employees' Shareholding Association	80,447,952	2.42%
Trust & Custody Services Bank, Ltd.	79,660,000	2.39%
Mizuho Corporate Bank, Ltd.	74,958,682	2.25%

Note: NATS CUMCO is the nominee name of the depository bank, Citibank, N.A., for the aggregate of the Company's American Depositary Receipts (ADRs) holders.

Composition of Shareholders

As of March 31, 2003

Financial Institutions and Securities Firms	36.83%
Individuals	30.44%
Foreign Investors	29.38%
Others	3.34%
Governments	0.01%

Transfer Agent for the Shares

Tokyo Securities Transfer Agent Co., Ltd.
5-1, Marunouchi, 1-chome, Chiyoda-ku, Tokyo, 100-0005, Japan
TEL: +81-3-3212-4611

Depository and Registrar for American Depositary Receipts

Citibank, N.A.
111 Wall Street, 20th Floor
New York, New York 10005, USA
TEL: U.S.A. 1-877-CITI-ADR(248-4237)(toll-free)
International +1-816-843-4281
E-mail: citibank@em.fcnhd.com
URL: www.citibank.com/adr
(New York Stock Exchange Listed Symbol — HIT)

Overseas Stock Exchange Listings

Luxembourg, Frankfurt, Amsterdam, Paris and New York stock exchanges

Japanese Stock Exchange Listings

Tokyo, Osaka, Nagoya, Fukuoka, and Sapporo stock exchanges