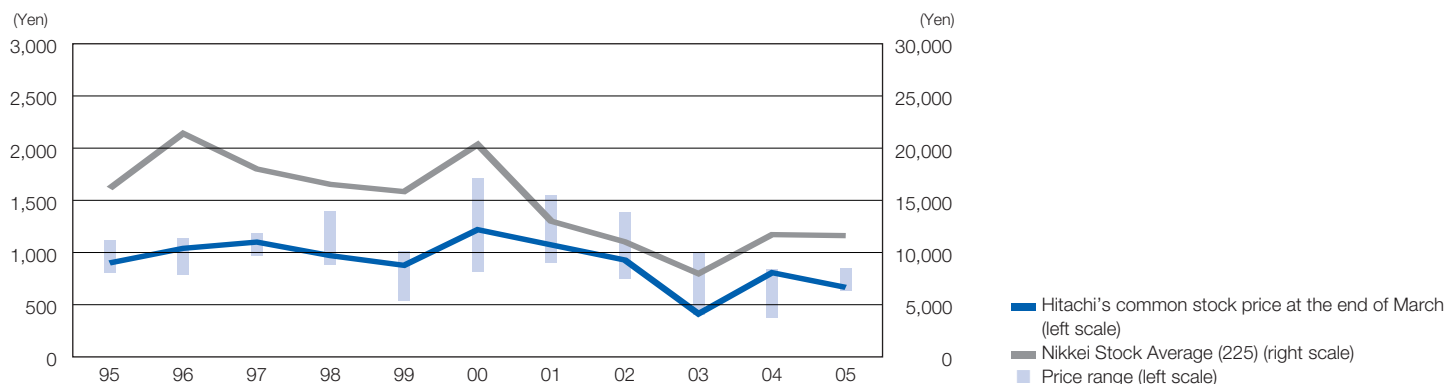


Stock Information

Common Stock Price Movement (Tokyo Stock Exchange)



Price Range of Hitachi Common Stock (Tokyo Stock Exchange)

	1995	1996	1997	1998	1999	2000	2001	2002	2003	2004	2005
Price range High	¥ 1,120	¥ 1,140	¥ 1,180	¥ 1,390	¥ 1,015	¥ 1,709	¥ 1,549	¥ 1,380	¥ 997	¥ 835	¥ 850
Price range Low	799	781	961	877	532	814	899	745	398	366	627
Price at the end of March	900	1,040	1,100	970	877	1,219	1,073	928	413	807	666
Nikkei Stock Average (225)	16,139	21,406	18,003	16,527	15,836	20,337	12,999	11,024	7,972	11,715	11,618

Note: Common stock prices are those of Hitachi, Ltd.

Price/Earnings Ratio, Price/Cash Flow Ratio and Price/Book Value Ratio

Years ended March 31

	1995	1996	1997	1998	1999	2000	2001	2002	2003	2004	2005
Number of shares on which diluted net income per share is calculated (thousand)	3,534,231	3,568,498	3,547,591	3,366,369	3,337,895	3,366,369	3,544,817	3,337,850	3,351,625	3,303,759	3,361,101
Common stock of Hitachi, Ltd. at March 31 (thousand)	3,287,404	3,329,139	3,337,796	3,337,895	3,337,895	3,337,900	3,337,932	3,338,481	3,368,124	3,368,125	3,368,126
Net income (loss) per share (Diluted) (¥)	33.02	40.48	25.97	3.58	(98.15)	4.99	30.32	(144.95)	8.19	4.75	15.15
Price/Earnings ratio (Times)	27.3	25.7	42.4	270.9	—	244.3	35.4	—	50.4	170.0	44.0
Free cash flows per share (¥)	—	(55.88)	(108.18)	(64.63)	(18.48)	4.71	46.47	62.91	8.13	101.70	11.42
Price/Free cash flow ratio (Times)	—	—	—	—	—	258.76	23.09	14.75	50.83	7.94	58.42
Stockholders' equity per share (¥)	922.73	1,068.00	1,054.26	1,012.77	900.57	895.08	857.27	690.28	550.76	657.42	692.73
Price/Book value ratio (Times)	0.98	0.97	1.04	0.96	0.97	1.36	1.25	1.34	0.75	1.23	0.96
Cash dividends declared per share (¥)	11.00	11.00	11.00	11.00	5.50	6.00	11.00	3.00	6.00	8.00	11.00

Notes: 1. Stockholders' equity per share is based on common stock of Hitachi, Ltd. as of March 31.

2. Free cash flows per share is based on the number of shares on which diluted net income (loss) per share is calculated.

3. See notes on inside cover.

Equity-Linked Financings

As of March 31, 2005

Issue Date	Type	Outstanding	Coupon (%)	Conversion Price	Redemption Date
10/19/2004	CB #A	¥50,000 million	0.0	¥1,009*	10/19/2009
10/19/2004	CB #B	¥50,000 million	0.0	¥1,009*	10/19/2009

*The Conversion prices are subject to revision.

Major Stockholders

As of March 31, 2005

	Numbers of Shares Held	Percentage of Shares Held
NATS CUMCO	216,030,050	6.41%
The Master Trust Bank of Japan, Ltd.	194,452,000	5.77%
Japan Trustee Services Bank, Ltd.	172,379,000	5.12%
The Chase Manhattan Bank, N.A. London	149,190,746	4.43%
State Street Bank and Trust Company	146,737,849	4.36%
Nippon Life Insurance Company	100,630,195	2.99%
Hitachi Employees' Shareholding Association	91,625,952	2.72%
The Dai-ichi Mutual Life Insurance Company	75,992,222	2.26%
Trust & Custody Services Bank, Ltd.	59,499,000	1.77%
Meiji Yasuda Life Insurance Company	49,492,818	1.47%

Note: NATS CUMCO is the nominee name of the depository bank, Citibank, N.A., for the aggregate of the Company's American Depositary Receipts (ADRs) holders.

Composition of Shareholders

As of March 31, 2005

Foreign Investors	36.47%
Individuals	31.67%
Financial Institutions and Securities Firms	27.90%
Others	3.96%

Transfer Agent for the Shares

Tokyo Securities Transfer Agent Co., Ltd.
4-2, Marunouchi, 1-chome, Chiyoda-ku, Tokyo, 100-0005, Japan
TEL: +81-3-3212-4611

Depository and Registrar for American Depositary Receipts

Citibank, N.A. Shareholder Services
P.O. Box 43077
Providence, Rhode Island 02940-3077 USA
TEL: U.S.A. 1-877-CITI-ADR (248-4237) (toll-free)
International +1-816-843-4281
E-mail: citibank@shareholders-online.com
URL: www.citigroup.com/adr
(New York Stock Exchange Listed Symbol — HIT)

Overseas Stock Exchange Listings

Luxembourg, Frankfurt, Euronext Amsterdam, Euronext Paris and New York stock exchanges

Japanese Stock Exchange Listings

Tokyo, Osaka, Nagoya, Fukuoka, and Sapporo stock exchanges