

FOR IMMEDIATE RELEASE

Hitachi Announces Reorganize Management Structure

-- Newly Establish the Automotive Systems Group --

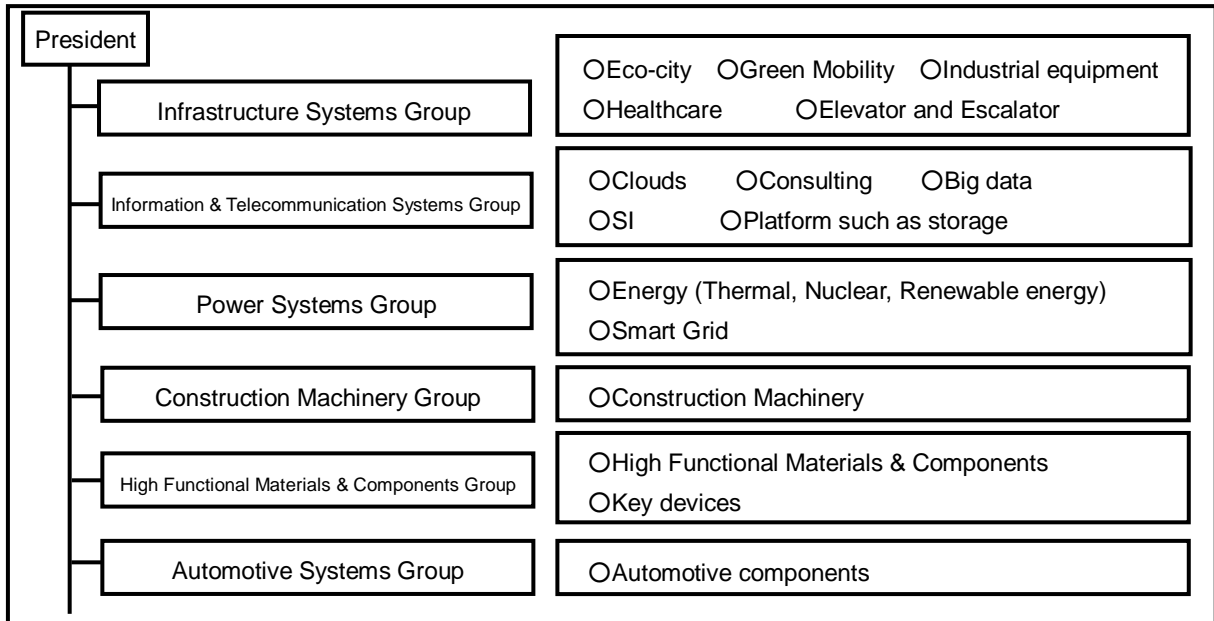
Tokyo, March 28, 2013 --- Hitachi, Ltd. (TSE: 6501, “Hitachi”) today announced that it has decided to reorganize the management structure of the Hitachi Group, which is currently composed of five groups, into six groups on April 1. Hitachi will establish the Automotive Systems Group.

With the intention of enabling swift response to the dynamic global changes in business models and services centered on social infrastructure, on April 1, 2012 the Hitachi Group reorganized the entire Hitachi Group into five groups to achieve an increased focus on growing fields. The automotive components business was an element of the Infrastructure Systems Group, and by promoting smoother coordination between automobiles, which are an important means of moving around urban areas, and infrastructure systems, the Infrastructure Systems Group drove initiatives to advance urban functions. Hitachi has now judged that it is necessary to bring about more speedy management decision-making because going forward there will be accelerating changes in the needs of regions and of customers.

Looking ahead, the Automotive Systems Group including Hitachi Automotive Systems, Ltd. aims to develop further in the global market based on growing the “local production for local consumption” business model and to be a global major player.

- more -

■ Hitachi's Management Structure Based on Six Groups



About Hitachi, Ltd.

Hitachi, Ltd. (TSE: 6501), headquartered in Tokyo, Japan, is a leading global electronics company with approximately 320,000 employees worldwide. Fiscal 2011 (ended March 31, 2012) consolidated revenues totaled 9,665 billion yen (\$117.8 billion). Hitachi is focusing more than ever on the Social Innovation Business, which includes information and telecommunication systems, power systems, industrial, transportation and urban development systems, as well as the sophisticated materials and key devices that support them.

For more information on Hitachi, please visit the company's website at <http://www.hitachi.com>.

###

Information contained in this news release is current as of the date of the press announcement, but may be subject to change without prior notice.
