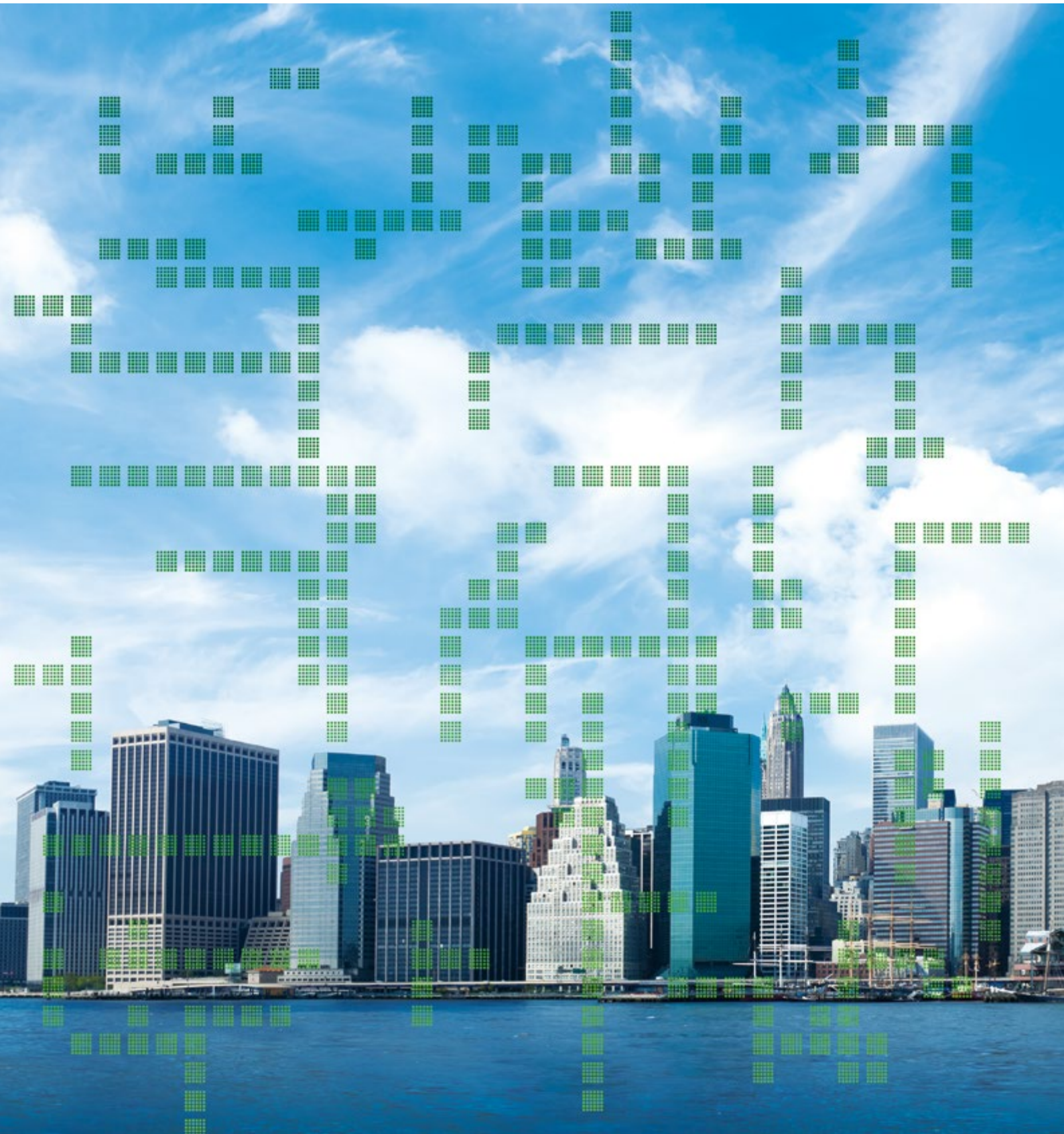


## Hitachi Sustainability Report 2016





Management Approach

Activities

Performance Data

## Contents

<b>Introduction</b>	<b>02</b>		
① How to Use This Report	02	① Fair Operating Practices	52–57
① Editorial Policy	02	Promoting Work Practices in Line with International Ethics Codes	52
① Hitachi and Society	04	Engaging in Responsible Procurement	54
<b>Management Approach</b>	<b>09</b>	① Customers (Consumer Issues)	58–65
① Leadership	10–11	Pursuing Customer Satisfaction	59
CEO's Message	10	Ensuring Accessibility to Products and Services	61
Executive Officer's Message: CSR and the Environment	11	Ensuring Thorough Management of Quality and Safety	63
① Recognition of Social Responsibility	12–23	① Community Involvement and Development	66–67
Realizing Sustainable, Innovative Management	12	Promoting Sustainable Community Involvement and Development	66
Understanding Issues Through Dialogue and Taking Part in Initiatives	19	① Environment	68–92
① Review and Improvement of CSR Activities	24–27	Promoting Environmental Management	69
Enhancing CSR Management	24	Enhancing Environmental Management on an Ongoing Basis	72
		Responding to Environmental Risks and Opportunities	81
		Reducing the Environmental Burden of Our Business Operations (Fiscal 2015 Results)	82
		Preserving Ecosystems	91
<b>Activities</b>	<b>28</b>	<b>Performance Data</b>	<b>93</b>
① Corporate Governance	29–37	① Key Indicators	94–95
Pursuing Management Transparency and Efficiency	29	① Overview of Financial Results, Board Members, and Employee Data	96–97
Sharing a Hitachi Group Identity	33	① Main Assessments and Awards	98–99
Advancing Risk Management on Multiple Fronts	35	① Independent Assurance	100
① Human Rights	38–40		
Respect for Human Rights Throughout the Value Chain	38		
Respect for Workers' Rights	40		
① Labor Practices	41–51		
Achieving a Fair and Equitable Work Environment	42		
Promoting Diversity and Inclusion	42		
Promoting Occupational Health and Safety	47		
A Strategy for Growing Together with Our Global Human Capital	49		