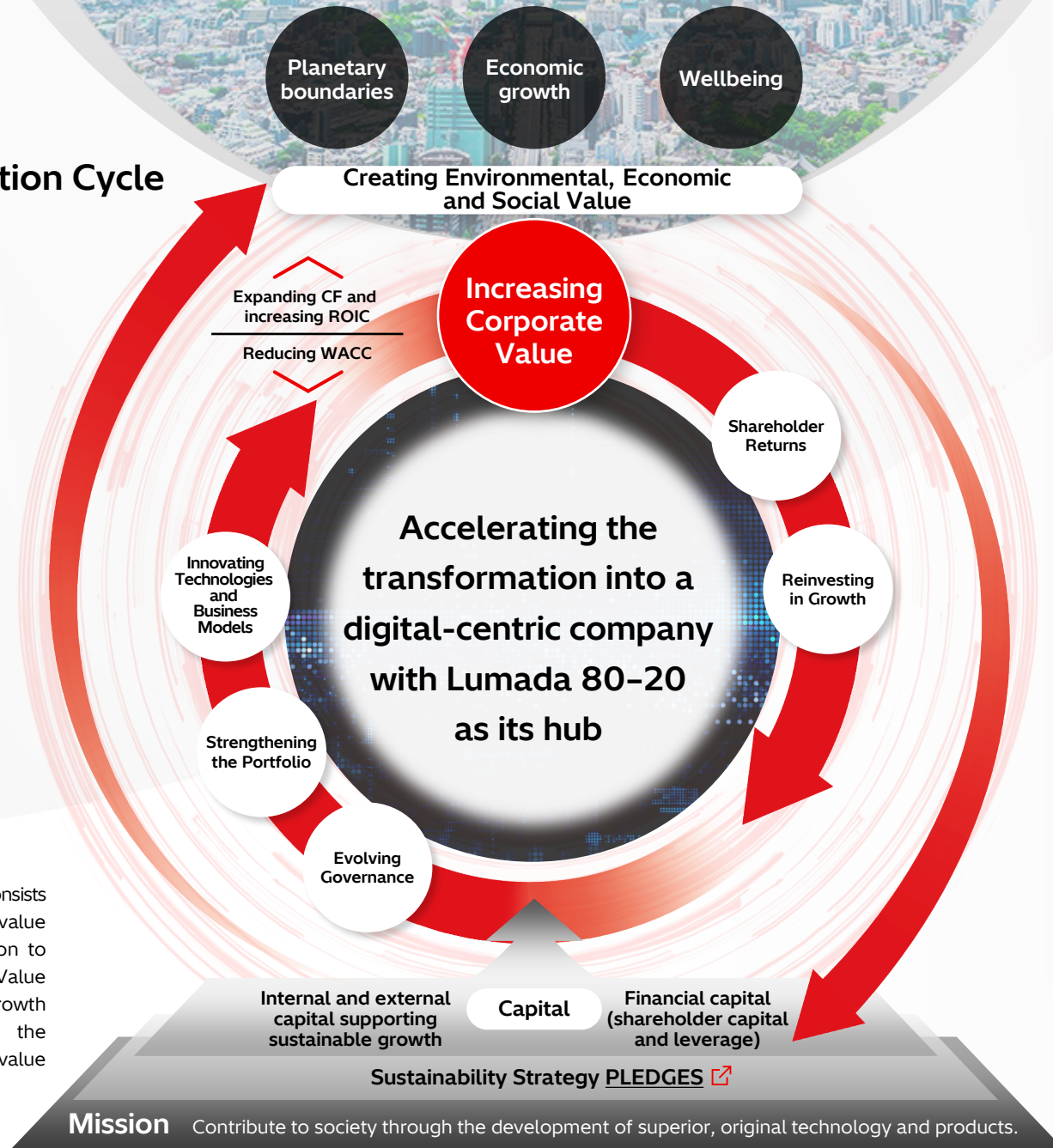


Contributing to the Realization of a Harmonized Society through the Social Innovation Business

The Value Creation Cycle of Hitachi



The *Integrated Report 2025* consists of three parts based on our value creation cycle: Value Creation to achieve further growth, Value Integration to support our growth and Value Empowerment, the wellspring of our corporate value creation.

Contents

Editorial Policy/ Our Reporting Universe	01
Who We Are	
The Value Creation Cycle of Hitachi	02
Hitachi at a Glance	03
Corporate Philosophy/ Hitachi Founding Spirit	04
Hitachi's Journey	05
Value Creation	
CEO Message	06
Inspire 2027, the Hitachi Group's Management Plan	12
Executive Officers	13
Value Integration	
Evolution of Lumada	14
Research & Development Strategy/ Intellectual Property Strategy	15
Four Core Business Strategies	17
CFO and CRMO Message	25
Value Empowerment	
Chief Sustainability Officer, CHRO, and CDEIO Message	30
Sustainability Strategy PLEDGES	31
Human Capital Strategy	32
Corporate Governance	
Message from the Chairman of the Board	34
Messages from the Newly Appointed Directors	35
Corporate Governance	36
Data	
Past Mid-term Management Plans	43
10-Year Financial Data	44
5-Year ESG Data	45
Corporate Data and Stock Information	46