

HITACHI

Software-defined storage systems

Reducing the burden on the environment by using
the Hitachi Virtual Storage Platform One SDS Block Provision Service

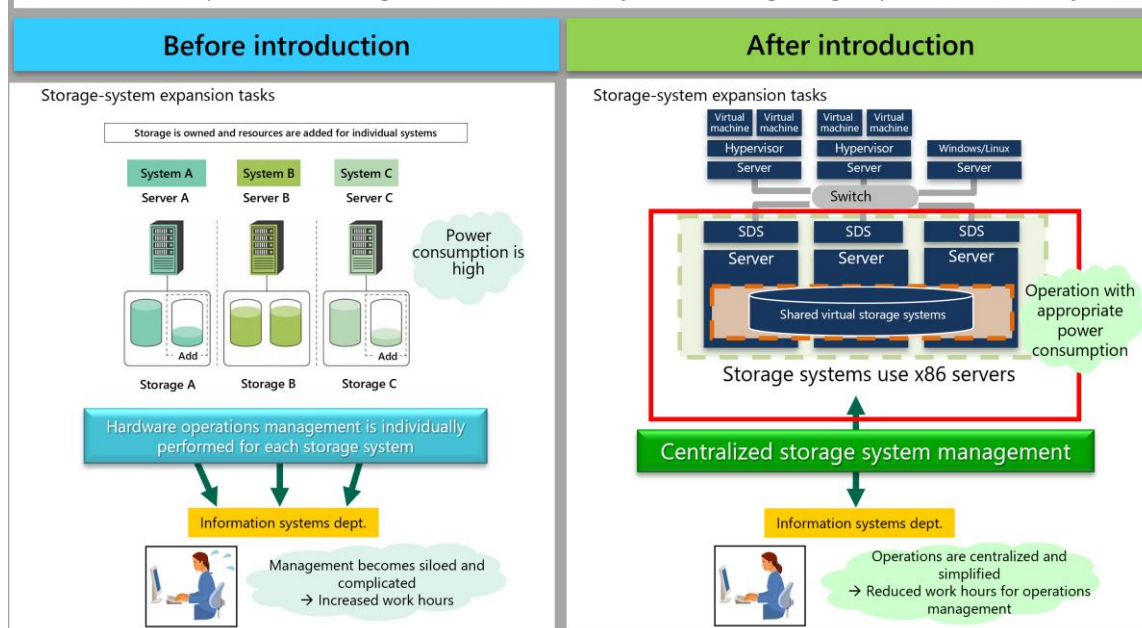
The Hitachi Virtual Storage Platform One SDS Block Provision Service simplifies business operations and reduces power consumption of equipment used and work hours of the information system department.

(CO₂ emissions can be reduced by 26%*)

Customer's issues

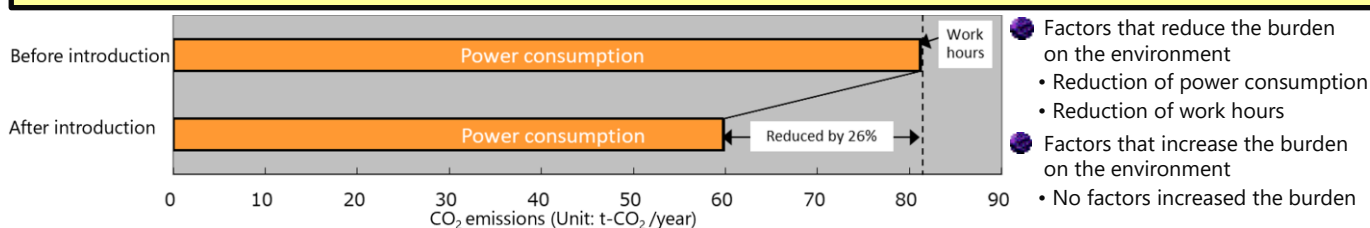
- (1) In operations for each storage system, there were differences in disk utilization rates, which resulted in higher power consumption.
- (2) In operations for each storage system, management became siloed and complicated, leading to an increase in work hours.

Functional unit: Operation and management tasks for internal systems, including storage expansion four times a year



Effects

- (1) The burden on the environment is reduced by decreasing power consumption through the consolidation and replacement of storage systems.
- (2) After introducing the service, the management of the storage systems is centralized and simplified, and operational work hours are reduced.



*1: CO₂ emissions: Reduction per year = 21 t-CO₂; CO₂ reduction rate: 26%)

- The values of environment impact factors differ depending on the evaluation conditions and the evaluation model. Please contact us for details of the system configuration used for the evaluation model.
- This evaluation uses Hitachi, Ltd.'s CO₂ calculation method SI-LCA^{*2} at the stage of actual use (based on information as of December 2024) as the target of evaluation.

*2: SI-LCA: System Integration-Life Cycle Assessment

The SI-LCA method complies with the Guideline for Information and Communication Technology (ICT) Eco-Efficiency Evaluation (issued by The Japan Forum on Eco-efficiency, currently known as the LCA Japan Forum, in March 2006)

*3: Individual estimates are needed for additional support for servers and server-embedded SSDs.

Information site: <https://www.hitachivantara.com/en-us/products/storage-platforms/data-platform>

Inquiries: <https://www.hitachivantara.com/en-us/company/contact>

Hitachi Vantara, Ltd.

292 Yoshidacho Totsuka-ku, Yokohama-shi, Kanagawa-ken 244-0817 Japan
Tel: +81-45-870-1533
www.hitachivantara.com/en-us/home

Copyright © Hitachi Vantara, Ltd. 2024, 2025
All rights reserved.