

Research and Development of Annealing- and Gate-based Quantum Computers

Quantum computers are starting to be seen as a promising way to handle large-scale problems that classical computers have been unable to compute. To provide better solutions to customers, Hitachi is developing separate projects on annealing- and gate-based quantum computers respectively. Hitachi's R&D on annealing-based quantum computers began with a CMOS annealing machine in 2013. These models are quantum-inspired computers that do not make use of quantum effects, so they can handle large-scale problems. Hitachi has worked on them in partnership with a large number of customers, leading to a release announcement in 2020. Hitachi's R&D on gate-based quantum computers started with a silicon quantum computer that can handle large-scale problems. This work began in 2018 when a change in approach was made to enhance the development team in Japan, and to restart research being done on fundamental physics and related areas at the Hitachi Cambridge Laboratory in the UK. This article describes these initiatives on quantum computers.

Hiroyuki Mizuno, Ph.D.

Masanao Yamaoka, Ph.D.

1. Introduction

Quantum computers are starting to be seen as a very promising cutting-edge technology rivaling artificial intelligence (AI). Quantum computers have the potential to bring the world a “zero to one” change, but what do they mean for the proprietary hardware development in Hitachi's Social Innovation Business? Many of today's trendsetting IT companies have recently started shifting their value chains away from horizontal specialization and toward vertical integration. While services are at the center of this trend, hardware's role as a delivery box or method for bringing the services of these companies to their customers also makes it key in building advantageous customer relationships. Investment in proprietary hardware development is being directed to both edge and cloud applications, perhaps

due in part to the commoditization of services, solutions, and applications. Companies are showing a strong commitment to focusing only on customer satisfaction level. They are bridging the barriers between hardware, software and services, and even the barriers between industries. Existing companies and intermediaries are facing a digital disruption as a result. While trendsetting IT companies still have some ground to cover in the development of quantum computers, research and development (R&D) rooted in customer satisfaction level is now underway.

These trends serve to reaffirm the idea that the role of the new computer development work in Hitachi's Social Innovation Business is to develop products useful for providing better solutions to customers. Therefore, the quantum computers being developed by Hitachi should be compared to existing classical computers currently providing solutions instead of to the quantum computers of competitors.

2. Hitachi's Quantum Computer R&D

As described above, Hitachi sees the role of its computer development work as creating products that are useful for providing better solutions to customers. Being able to handle large-scale or other problems unsolvable with today's classical computers is the objective of quantum computer development. Barriers such as computational explosion make efficient computation of many of today's problems impossible in practice when they are expanded to large-scale problems. These problems are handled by computing approximations over a manageable range, or are solved by reducing the scale of the problem and using the reduced-scale solution as a proxy for the solution actually being sought. Hitachi's annealing-based quantum computer and gate-based quantum computer initiatives are each described separately below.

2.1

Hitachi's Annealing-based Quantum Computer: CMOS Annealing Machine

R&D on new computers useful for providing better solutions to customers started with the inception of a new-generation

computing project at Hitachi Central Research Laboratory (as it was then known) in July 2011. In May of the same year, Canadian quantum computing company D-Wave Systems Inc. had announced D-Wave^{*1} One, calling it the world's first commercial quantum computer. As the news spread rapidly worldwide, it also became clear that the product differed from the textbook definition of a quantum computer. It was an annealing-based quantum computer, a type specialized for a particular type of problem (combination optimization problems). Its short quantum coherence life^{*2} also resulted in many commenters criticizing it for failing to increase speed using quantum computations. Meanwhile, Hitachi felt that even without the use of quantum effects, there might be a better way to solve combination optimization problems than with classical computers. In 2013, the company started R&D on a complementary metal-oxide semiconductor (CMOS) annealing machine. These devices are known today as quantum-inspired computers. Hitachi played a key role in pioneering them.

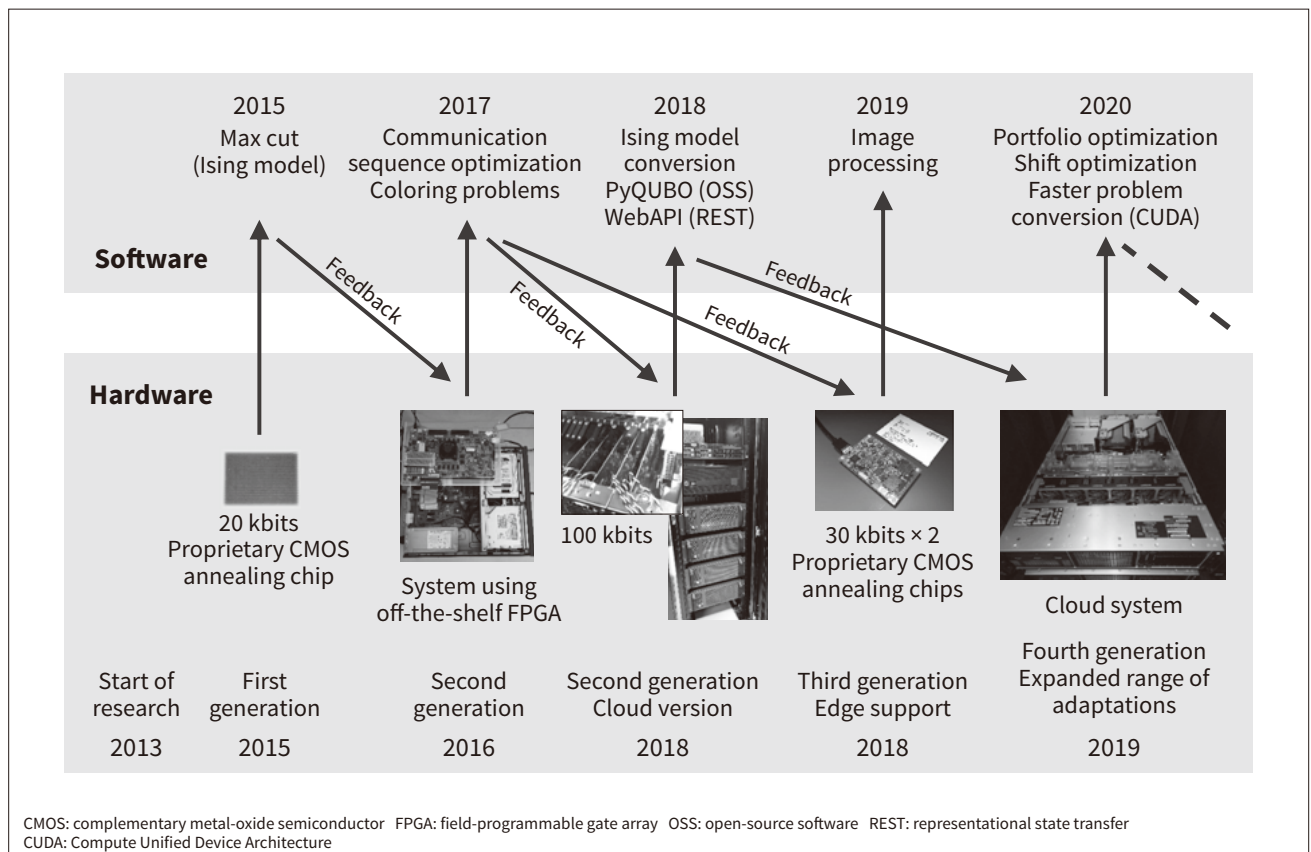
Figure 1 shows the flow of development done on the CMOS annealing machine to date. Software/hardware co-design (tick-tock development model) is the key to

*1 D-Wave is a registered trademark of D-Wave Systems Inc.

*2 The amount of time that the coherence state (a type of quantum effect) can continue being maintained.

Figure 1 — Flow of CMOS Annealing Machine Development to Date

Shown here is the flow of software/hardware co-design (tick-tock development model) done to date.



developing equipment useful for providing better solutions to customers. Customer operations can be plugged into a model that can be solved by the CMOS annealing machine, or operations that the CMOS annealing machine can apply can be found. However, these approaches become substitutes for existing solutions when the customer operations are existing operations, which makes market entry difficult. Similarly, even bringing a problem's solution time down from 1 second to 0.01 second (for example) will not result in major benefits from the new performance value or in customers eager to install CMOS annealing machines since the existing performance value was still good enough. An effective method for overcoming this state of equilibrium is to perform several repeated cycles of concrete proof of concept (PoC) and proof of value (PoV) demonstrations using the new hardware, followed by feedback of the results to develop the next hardware and software and the applications using them. To accomplish this objective, Hitachi's system engineers play an active role in CMOS annealing machine development. They have worked with customers to run PoCs and actual demonstration tests of non-life insurance portfolio optimization⁽¹⁾. The spread of COVID-19 has resulted in close contact being avoided as research activities continue at the Central Research Laboratory. So, researchers working with CMOS annealing have worked on production in shifts, tailoring working hours accordingly when demonstrating application benefits. These activities

led to the release of a work shift optimization solution being announced in 2020⁽²⁾.

2.2

Hitachi's Gate-based Quantum Computer: Large-scale Integrated Silicon Quantum Computer

Figure 2 shows the obstacles facing the development of quantum computers as outlined in 2018 by John Preskill, Professor of Theoretical Physics at the California Institute of Technology. The first obstacle is known as quantum supremacy, which requires that quantum computers surpass the performance of classical computers for certain algorithms irrespective of usefulness. This obstacle was overcome by Google LLC in 2019⁽³⁾. While this achievement represents an important R&D milestone, the developed quantum computer's value to industry and consumers is still unknown. The next of Preskill's obstacles is known as quantum advantage, which requires that quantum computers surpass the performance of classical computers in an algorithm useful to industry or society. So far, no-one has overcome this obstacle. Overcoming the next obstacle to create the type of general-purpose quantum computer defined in textbooks could take many years. Meanwhile, what is known is that a type of quantum computer useful to industry and society could exist even before reaching that stage. This type is known as a noisy intermediate-scale quantum (NISQ) computer, which is a computer that excels

Figure 2 — Obstacles to Quantum Computer Development

Illustrated here are the obstacles facing the creation of general-purpose quantum computers as set forth in 2019 by John Preskill, Professor of Theoretical Physics at the California Institute of Technology.

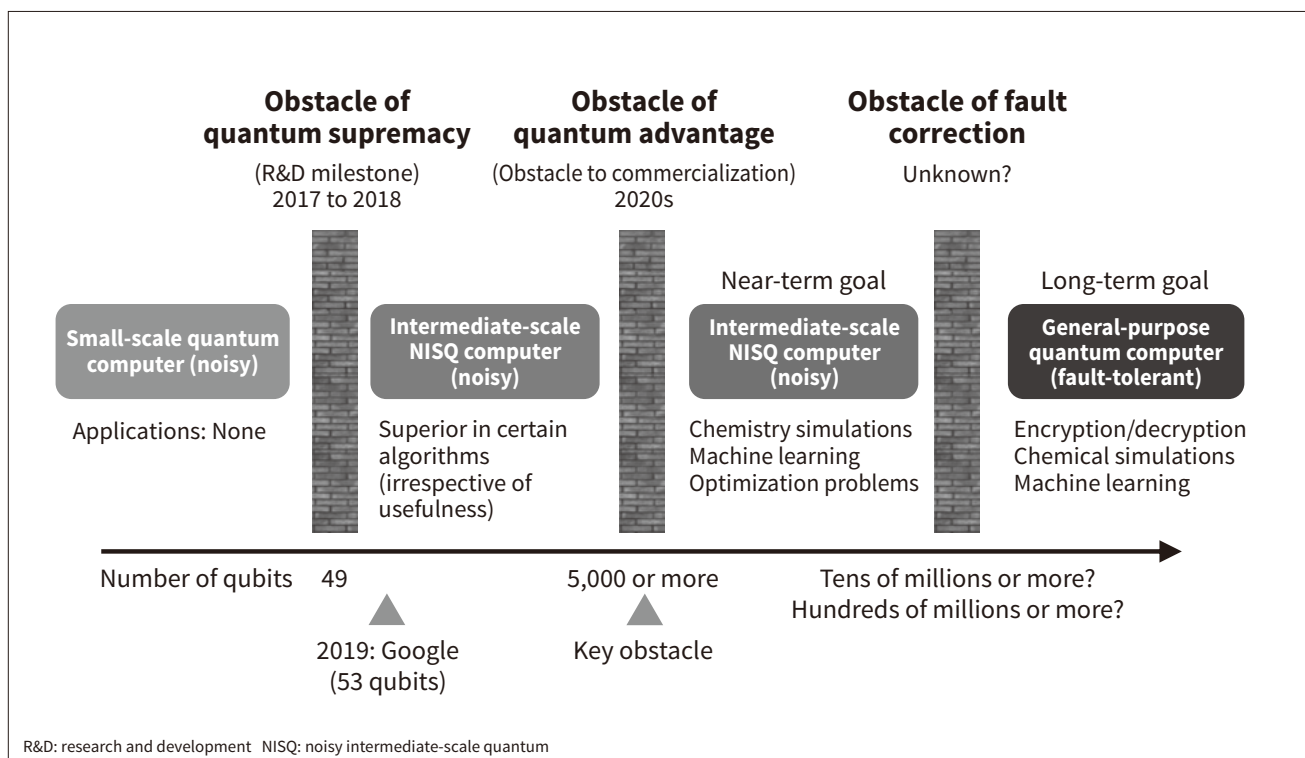
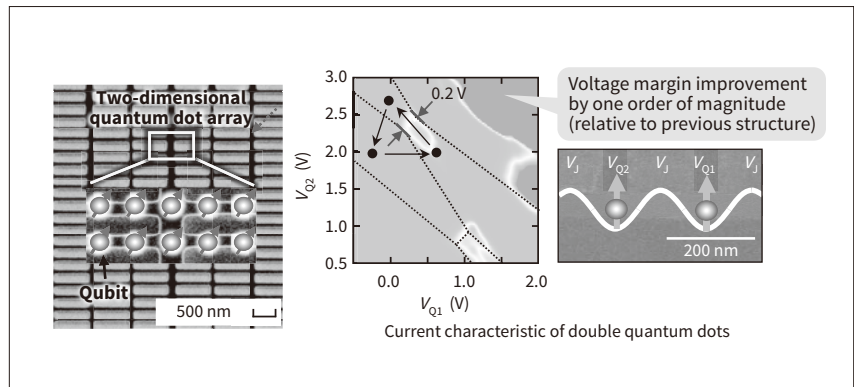


Figure 3 — Basic Technology Behind Silicon Quantum Bit Arrays

Hitachi has developed basic array technology that merges fundamental quantum physics with large-scale semiconductor memory control technology to control a large number of silicon quantum dots arranged into a two-dimensional state on a semiconductor chip. A demonstration of its operation showed that “quantum dots” serving as boxes enclosing single electrons can be formed in a two-dimensional array state at the desired positions. The technology was also shown to improve the operation voltage margin by an order of magnitude relative to the previous structure, helping pave the way to large-scale stable operation of quantum dots.



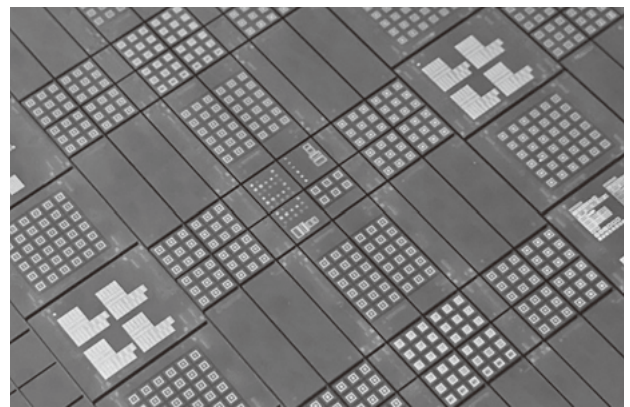
at simulating quantum mechanical behaviors and handling high-dimensional data. It is expected to help speed up machine learning and assist the design of materials such as drugs and catalysts using multibody problems and other quantum chemistry computations closely related to quantum mechanics.

If the goal is to create equipment useful for providing better solutions to customers, then an NISQ device would certainly be the quantum computer to target. However, improvements to both the quality and quantity of quantum computers pose challenges for their creation. Hitachi has previously conducted fundamental physics research on silicon quantum bit elements at the Hitachi Cambridge Laboratory in the UK. This work has resulted in achievements such as highly accurate reading of spin states when reading quantum states⁽⁴⁾. Competitors usually focus on improving quantum bit element completeness, adopting a bottom-up approach that prioritizes quality by progressively increasing the number of quantum bits to two, three, and more. While devices with over 50 quantum bits have been developed using superconducting quantum bits, creating an NISQ device that can overcome the obstacle of quantum advantage by extending this approach would clearly be difficult.

Hitachi adopted a major change in approach in FY 2018 when it decided on a top-down method diametrically opposed to the conventional method. The new approach aims to create a quantum computer designed to prioritize quantity from the outset by making maximally effective use of the outstanding integrability of silicon semiconductor technology that makes it possible to integrate a large number of elements having uniform properties. Quality is subsequently improved by researching methods of detecting and correcting surface symbol and other errors, and developing various technologies (two-dimensional quantum bit arrays also made possible by the high integrability of silicon, ultra-low temperature CMOS circuits/packaging systems, hot silicon quantum bits, and calibration/digital correction). In 2020, Hitachi used this top-down method to prototype the basic structure of a quantum bit array enabling the formation of 64 quantum bits⁽⁵⁾. The prototype demonstrated

Figure 4 — Chip Used to Prototype Basic Structure of Quantum Bit Array

The prototyped quantum bit array is shown here.



that a quantum dot storing a single electron can be stably formed at a desired position in the array by using technologies such as narrow-pitch quantum bit/connection-control MOS formation made possible by a self-alignment process, and high-stability quantum bit formation using silicon on insulator (SOI) and intrinsic channels. **Figure 3** shows an overview of the basic technologies used in the silicon quantum bit array. **Figure 4** shows the chip used to prototype the basic structure of the quantum bit array. Hitachi is planning to use this array structure to work on demonstrating quantum bit operations, and to step up the pace of development on a silicon quantum computer enabling large-scale integration.

3. Conclusions

In 2020, Hitachi started R&D on a silicon quantum computer as part of the Moonshot Research and Development Program launched by Japan's Cabinet Office. The company is also taking part in the IBM Q_{Network}³ project through the Quantum Innovation Initiative Consortium

³ A group dedicated to refining quantum computing. Member organizations can use the IBM Q_{Quantum} computer via the cloud, and access quantum technology assets owned by IBM.

(QIC) being promoted by the University of Tokyo and Keio University, and has started joint research on quantum algorithms using the IBM Q quantum computer developed by International Business Machines Corporation (IBM). Having set its sights on quickly overcoming the obstacle of quantum advantage, Hitachi is planning to continue work that bridges the barriers between hardware, software, and services.

Acknowledgments

Some of Hitachi's CMOS annealing machine achievements were obtained as the result of contracted work (JPNP16007) from the New Energy and Industrial Technology Development Organization (NEDO).

References

- 1) Hitachi News Release, "Commencement of Demonstration Experiment on Non-life Insurance Portfolio Optimization Using New Semiconductor-based Computer," (Jan. 2020) in Japanese, <https://www.hitachi.co.jp/New/cnews/month/2020/01/0108.html>
- 2) Hitachi News Release, "Solution Launched to Create Optimal Work Shifts for Dozens or Hundreds of People," (Oct. 2020) in Japanese, <http://www.hitachi.co.jp/New/cnews/month/2020/10/1019a.html>
- 3) F. Arute et al., "Quantum Supremacy Using a Programmable Superconducting Processor," *Nature*, 574, pp. 505–510 (Oct. 2019), <https://www.nature.com/articles/s41586-019-1666-5>
- 4) I. Ahmed et al., "Radio-Frequency Capacitive Gate-Based Sensing," *Physical Review Applied*, Vol. 10, Iss. 1, 014018 (Jul. 2018).
- 5) N. Lee et al., "Enhancing Electrostatic Coupling in Silicon Quantum Dot Array by Dual Gate Oxide Thickness for Large-Scale Integration," *Applied Physics Letters*, Vol. 116, Iss. 16, (Apr. 2020).

Authors



Hiroyuki Mizuno, Ph.D.

Center for Exploratory Research, Research & Development Group, Hitachi, Ltd. *Current work and research:* Research and development of quantum computer, artificial intelligence, and cyber human systems. *Society memberships:* IEEE.



Masanao Yamaoka, Ph.D.

Information Electronics Department, Center for Technology Innovation – Electronics and Instruments, Research & Development Group, Hitachi, Ltd. *Current work and research:* Research and development of CMOS annealing. *Society memberships:* IEEE and the Operations Research Society of Japan (ORSJ).